

Aviastar 2-stroke Glow Engines

Aviastar Engines: logically designed and manufactured using quality material and the latest automated machinery.

For example, the conrod bushing is made of a specially developed "KK" bronze alloy, a tough material to withstand high RPM. The same steel alloy used in racing motor cycles is used for the piston rings. The cylinders of all Aviastar engines are made of Cr steel alloy with a special heat treating process to ensure a hard and true cylinder, which will not distort under high operating temperatures. All cylinders are ground to the closest tolerance and manually honed to perfect roundness. Engines have dual ball bearings.

Engine HP ratings were with FAI fuel (0% nitromethane), on a hot summer day, 85% relative humidity. Engine Mount and Muffler are not included.

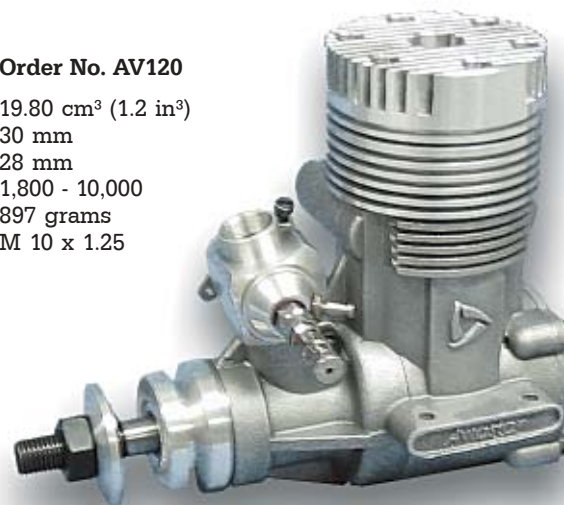
Engine Mounts (not pictured)

| Style | Engine | Order No. |
|--------------|-----------|-----------|
| BEAM MOUNT | 120 - 150 | AVP258001 |
| RADIAL MOUNT | 180 - 200 | AVP828002 |

Coming soon, AV-100 and AV-240!

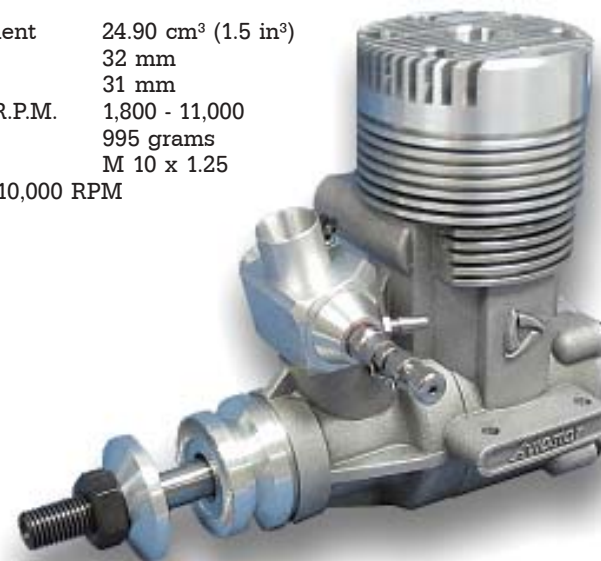
Aviastar AV-120 Order No. AV120

| | |
|------------------|--|
| Displacement | 19.80 cm ³ (1.2 in ³) |
| Bore | 30 mm |
| Stroke | 28 mm |
| Practical R.P.M. | 1,800 - 10,000 |
| Weight | 897 grams |
| Shaft Size | M 10 x 1.25 |
| | 3 HP @ 11,000 RPM |



Aviastar AV-150 Order No. AV150

| | |
|------------------|--|
| Displacement | 24.90 cm ³ (1.5 in ³) |
| Bore | 32 mm |
| Stroke | 31 mm |
| Practical R.P.M. | 1,800 - 11,000 |
| Weight | 995 grams |
| Shaft Size | M 10 x 1.25 |
| | 3.8 HP @ 10,000 RPM |



KAVAN
Exclusive Distributor
for Europe



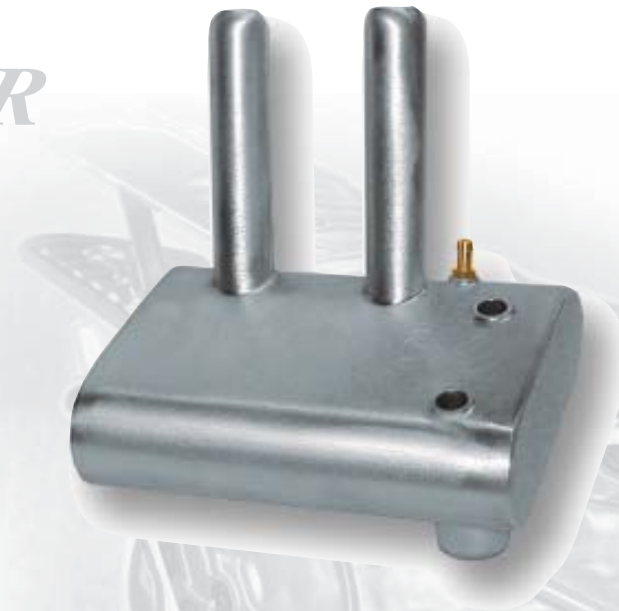
Aviastar AV-180 Order No. AV180
 Displacement 29.80 cm³ (1.8 in³)
 Bore 35 mm
 Stroke 31 mm
 Practical R.P.M. 1,800 - 9,500
 Weight 1,250 grams
 Shaft Size M 10 x 1.25
 4.0 HP @ 10,000 RPM



Sport Muffler for 120, 150 **Order No. BCM4550**
 Sport Muffler for 180, 200 **Order No. BCM4590**



Aviastar AV-200 Order No. AV200
 Displacement 32.50 cm³ (2.0 in³)
 Bore 36 mm
 Stroke 32 mm
 Practical R.P.M. 1,800 - 10,000
 Weight 1,280 grams
 Shaft Size M 10 x 1.25
 4.3 HP @ 9,500 RPM



Pitt Muffler for 120, 150 **Order No. BCM4551**
 Pitt Muffler for 180, 200 **Order No. BCM4591**

FK 50 MARK III-Gold

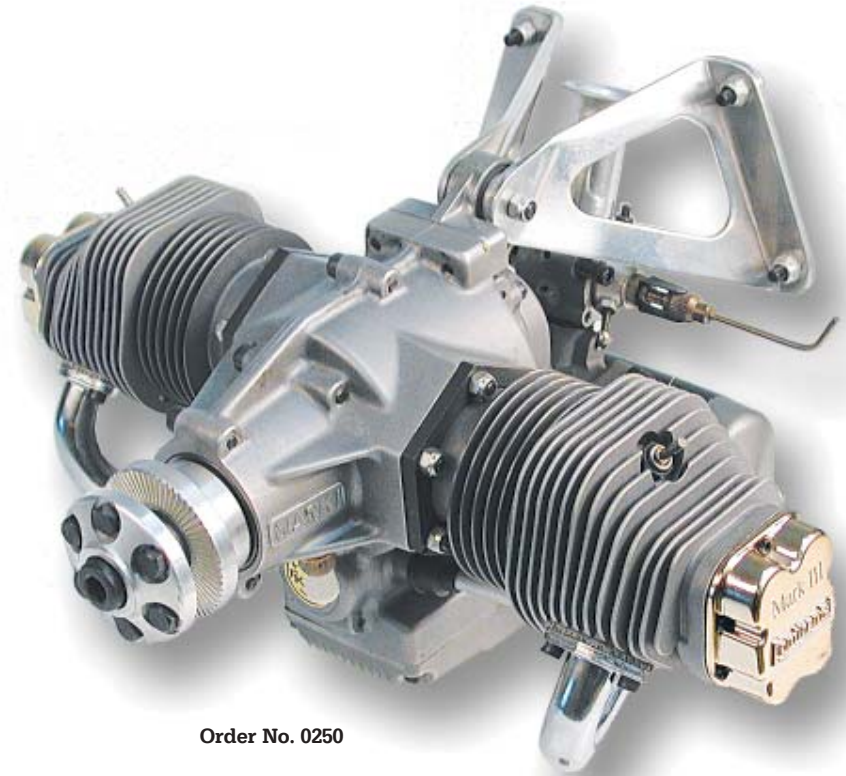
The FK 50 is a scale version of the world-famous Continental engine that was used in many popular early light aircraft. This alternate firing 4-cycle engine is virtually free of vibration and very economical in fuel consumption. Only the finest materials have been used in the production of this exclusive motor. The FK 50 is probably the only model engine available for which the methanol alcohol and oil are not mixed. Lubrication oil is put into the crankcase and circulated by an oil pump. We improved the FK 50 performance which essentially led to the FK 50 MARK III-Gold version. The special features of the MARK III-Gold are higher rpm, better idle and smoother running. The FK 50 Mark III-Gold includes the muffler.

FK 50 Mark III-Gold
 Dummy Cylinder, 1 piece
 Auxiliary Muffler System

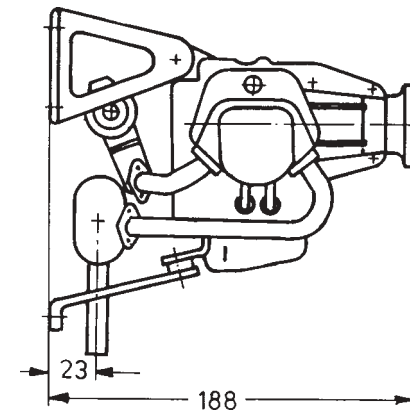
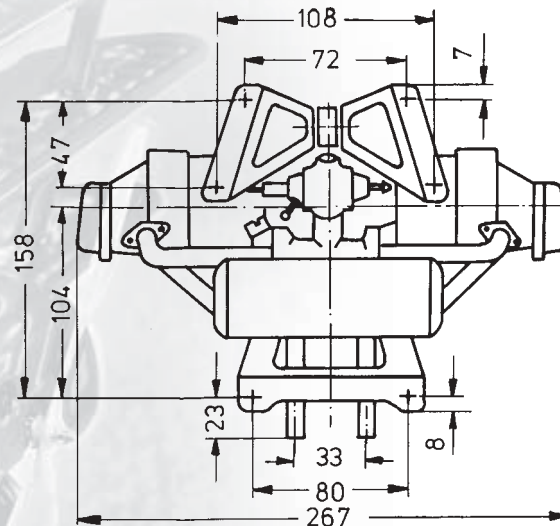
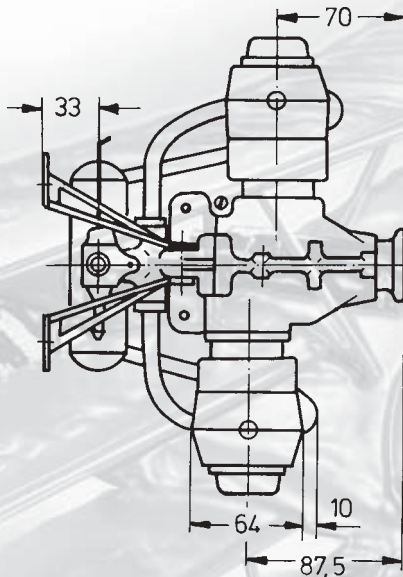
Order No. 0250
Order No. 0250/11A
Order No. 0250/57B

Specifications:

| | |
|-------------------|---|
| Displacement: | 50 cm ³ (3 in ³) |
| Induction system: | 4-Cycle, Mark III, o. h. v. |
| Bore: | 34 mm (1.34") |
| Stroke: | 28 mm (1.10") |
| Propeller: | 20 x 10" (determined by aircraft) |
| Fuel consumption: | 500 ml (16.9 oz)/20 Min. |
| Maximum rpm: | 8.200 rpm |
| Idle rpm: | 1.600 rpm |
| Horsepower: | 4,4 hp (3,3 kW) |
| Weight: | 2.450 g (5.40 lbs) |

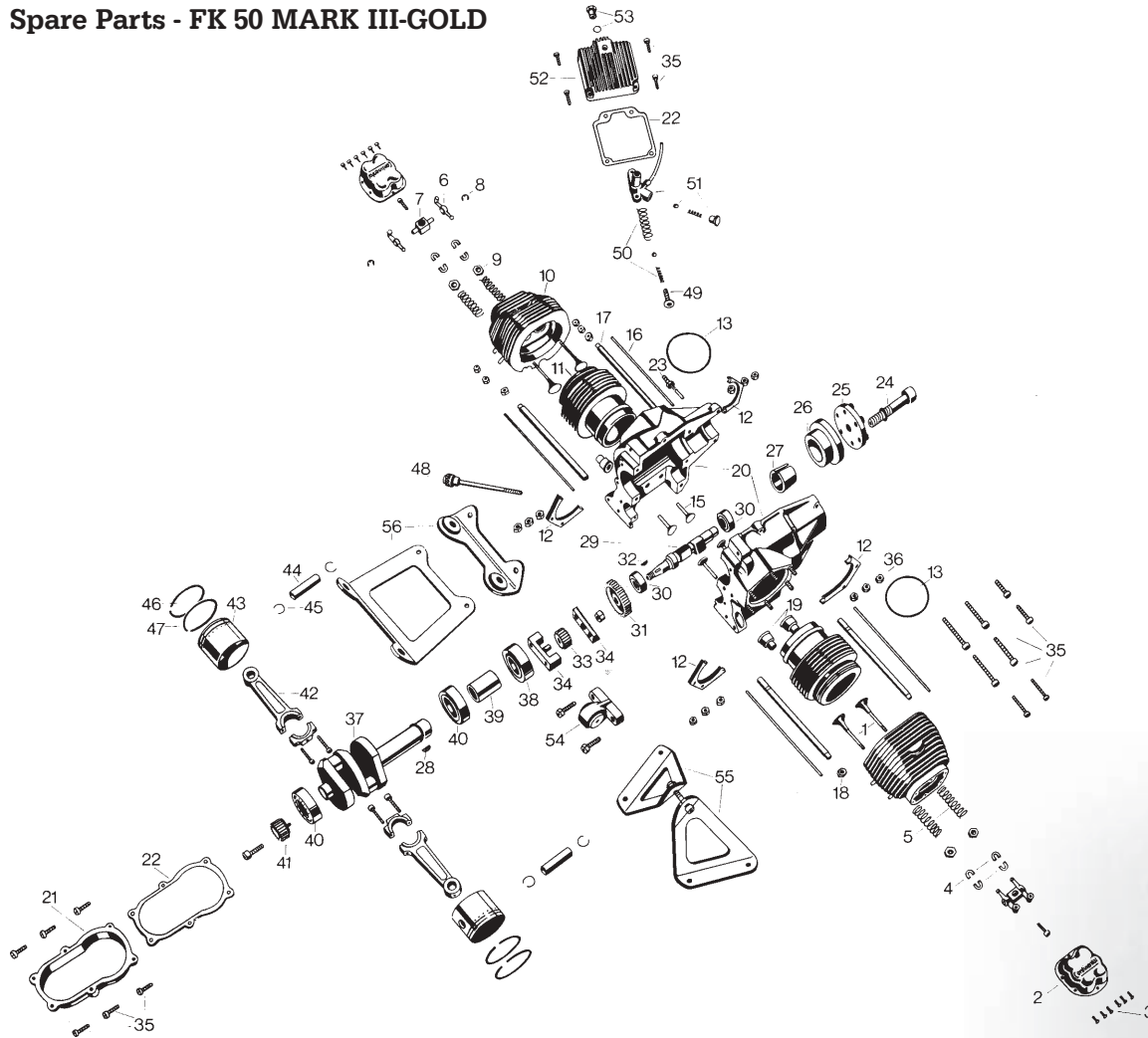


Order No. 0250



All values in mm.

Spare Parts - FK 50 MARK III-GOLD



| Order No. | Description |
|-----------|--------------------------|
| 0250/01 | Valve, pair |
| 0250/02 | Valve cover |
| 0250/03 | Valve cover screws, 12 |
| 0250/04 | Valve circlips, 4 |
| 0250/05 | Valve springs, 4 |
| 0250/06 | Rocker arms, complete, 2 |
| 0250/07 | Rocker arms support |
| 0250/08 | Circlips, 10 |
| 0250/09 | Spring retainer, 4 |
| 0250/10 | Cylinder head |

| Order No. | Description |
|-----------|---|
| 0250/10A | Cylinder head, w/valve springs, circlips, valves, spring retainer, complete |
| 0250/11 | Cylinder |
| 0250/12 | Cylinder flange, pair |
| 0250/13 | Cylinder head gaskets, copper, 2 |
| 0250/15 | Cam follower, 2 |
| 0250/16 | Push rod, 2 |
| 0250/17 | Push rod tube, 2 |
| 0250/18 | Push rod tube seal-head, 4 |
| 0250/19 | Push rod tube seal-crankcase, 2 |

| Order No. | Description |
|-----------|--|
| 0250/20 | Crankcase |
| 0250/21 | Rear cover |
| 0250/22 | Set of gaskets, set |
| 0250/23 | Pressure relief valve |
| 0250/24 | Prop retainer screw |
| 0250/25 | Prop washer |
| 0250/26 | Prop hub |
| 0250/27 | Cone |
| 0250/28 | Crankshaft key, 2 |
| 0250/29 | Camshaft w/nut |
| 0250/30 | Camshaft bearing, 2 |
| 0250/31 | Metal gear-camshaft |
| 0250/32 | Camshaft key, 2 |
| 0250/33 | Steel gear w/needle bearing |
| 0250/34 | Gear mounting block |
| 0250/35 | Set of screws, set |
| 0250/36 | Set of nuts, set |
| 0250/37 | Crankshaft |
| 0250/38 | Crankshaft bearing, sealed, front |
| 0250/39 | Distance bushing |
| 0250/40 | Crankshaft bearing, middle, rear |
| 0250/41 | Metal spur gear w/pin-crankshaft |
| 0250/42 | Connecting rod |
| 0250/43 | Piston |
| 0250/44 | Piston pin |
| 0250/45 | Wrist pin clips, 2 |
| 0250/46 | Compression ring |
| 0250/47 | Oil scraper-ring |
| 0250/48 | Dip stick |
| 0250/49 | Pump plunger |
| 0250/50 | Pressure spring |
| 0250/51 | Oil pump housing w/ball, spring, screw |
| 0250/52 | Sump |
| 0250/53 | Oil drain plug w/gasket, magnet |
| 0250/54 | Engine mounts, complete |
| 0250/55 | Engine mounts, top, set |
| 0250/56 | Engine mounts w/ bushing, bottom, set |
| 0250/57 | Muffler, complete |
| 0250/57A | Muffler, middle section |
| 0250/62 | Intake manifold |
| 0250/63 | Carburetor, complete |
| 0250/64 | Spraybar |
| 0250/65 | Needle valve |
| 0250/66 | Needle valve guide |
| 0250/67 | Carburetor arm |
| 0250/68 | Operating instructions |
| 0250/69 | Plastic fork w/roll |
| 0250/70 | Carburetor screw w/nut |
| 0250/71 | Intake funnel |
| 0250/72 | Exhaust pipe, right, short |
| 0250/73 | Exhaust pipe, left, long |
| 0250/74 | Intake manifold w/flange, right, short |
| 0250/75 | Intake manifold w/flange, left, long |